



TREECHAIN
NETWORK

GREEN PAPER



WHY TREE?

AIR

Trees are like the vacuums of our planet. Through their leaves and bark, they suck up harmful pollutants and release clean oxygen for us to breathe. In urban environments, trees absorb pollutant gases like nitrogen oxides, ozone, and carbon monoxide, and sweep up particles like dust and smoke.

Increasing levels of carbon dioxide caused by deforestation and fossil fuel combustion trap heat in the atmosphere. Healthy, strong trees act as carbon sinks; absorbing atmospheric carbon dioxide and reducing the effects of climate change.

WATER

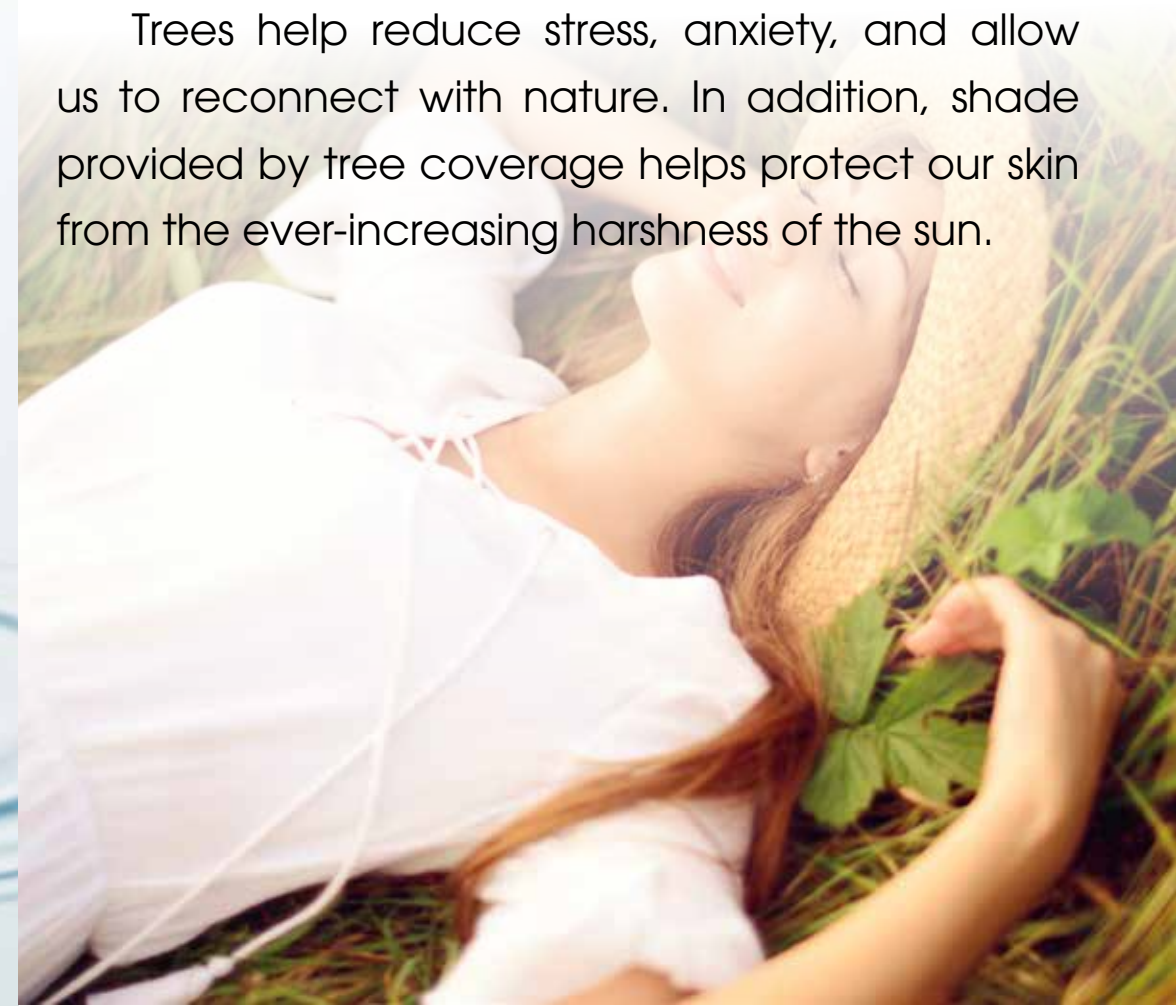
Trees play a key role in capturing rainwater and reducing the risk of natural disasters like floods and landslides. Their intricate root systems act like filters; removing pollutants and slowing down the water's absorption into the ground.

This process prevents harmful waterside erosion and reduces the risk of over-saturation and flooding. According to the Food and Agriculture Association of the United Nations, a mature evergreen tree can intercept more than 15,000 litres of water every year.

HEALTH

Did you know that hospital patients with rooms overlooking trees recover faster than those without the same view? It's impossible to ignore that feeling of elation you feel walking through a calm, quiet forest.

Trees help reduce stress, anxiety, and allow us to reconnect with nature. In addition, shade provided by tree coverage helps protect our skin from the ever-increasing harshness of the sun.



WHY TREE?

BIODIVERISTY

A single tree can be home to hundreds of species of insect, fungi, moss, mammals, and plants. Depending on the kind of food and shelter they need, different forest animals require different types of habitat. Without trees, forest creatures would have nowhere to call home.



CLIMATE

Trees help cool the planet by sucking in and storing harmful greenhouse gases, like carbon dioxide, into their trunks, branches, and leaves, and releasing oxygen back into the atmosphere. In cities, trees can reduce overall temperature by up to eight degrees Celsius.

With more than 50% of the world's population living in cities — a number expected to increase to 66% by the year 2050 — pollution and overheating are becoming a real threat. Fortunately, trees can absorb up to 150 kg of carbon dioxide per year, making cities a healthier, safer place to live.



SOCIAL IMPACT

From arborists, to loggers, to researchers, the job opportunities provided by the forestry industry are endless. We don't just rely on trees for work; sustainable tree farming provides timber to build homes and shelter, and wood to burn for cooking and heating.

Food-producing trees provide fruit, nuts, berries, and leaves for consumption by both humans and animals, and guarantee health and nutrition.





WHY SAVE TREES?

80%

of the world's forests are already destroyed & EVERY 2 SECONDS man destroys an area of forest the size of a football field.

**80,000
ACRES**

of forests disappear from the Earth every day! 46-58 THOUSAND square miles of forest are lost every year. That's equivalent to 36 football fields every minute

**300
BILLION**

tons of carbon are stored in the Earth's forests, which helps regulate its climate by regulating atmospheric gases, stabilizing rainfall, and protecting against desertification



VISION

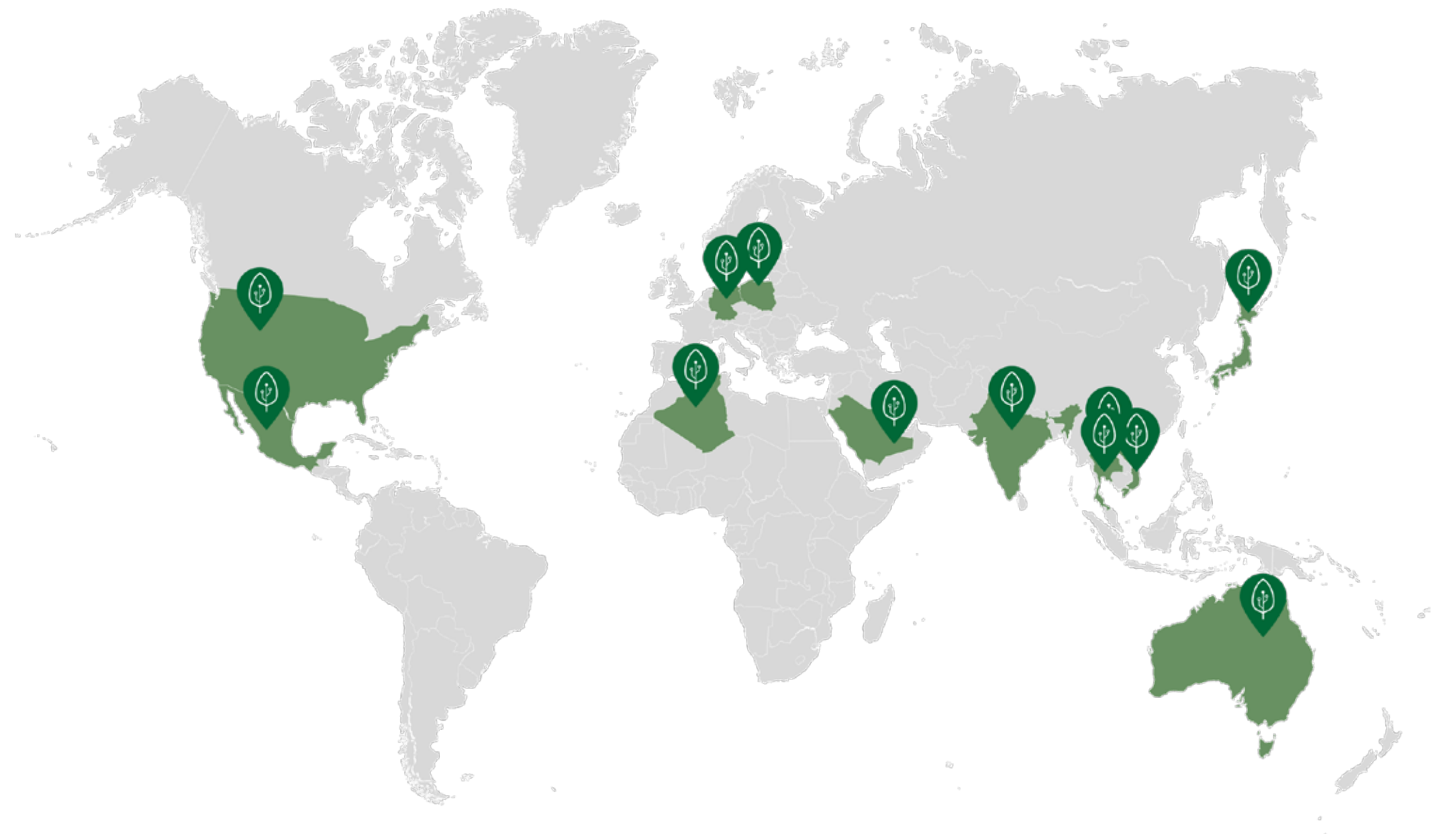
By 2030, the TreeChain network will:

- Grow 11 billion trees, and digitizing more than 1,500 billion trees globally (50% of trees on Earth)
- Develop, complete & improve the global tree maps (TreeChain Maps)
- Maximizing commercial opportunities to create a balance benefit system between The Earth & Humankind.

TREECHAIN MAPS

TreeChain Maps is a high-tech digital map that can keep track on every individual tree data such as planting date, age, species and owner. TreeChain Maps will locate the entire global tree system to create a network of trees that are digitized, protected, and optimized for commercial interests.

TreeChain Maps can show and guide members to any TCN tree location. At the same time, all users in the Treechain Network can connect with plant owners to discuss the plant benefits.



TREECHAIN MISSION



PROTECTION

Preserve the status of the primary forest system and the remaining tree network on Earth.



PLANTING

Planting new trees through TreeChain Network's planting models and projects.



CONNECTION

Connect and optimize the TreeChain network through the Nanochip and TreeChain Platform



ECOSYSTEM

Creating a balanced benefit ecosystem between humans & nature



GLOBAL TREE MAPS

Develop, improve and upgrade the Global Tree Maps

TREECHAIN PLATFORM

Planting Network

All resources (finance, seedling, human resources, tools, technology ...) for billions of new trees planted on Earth will be mobilized through the TreeChain Platform

Smart Tree

Each tree newly planted and digitized by the TreeChain Network will be attached TreeChain Biochip to become a intelligent living entity (smart-tree) that is connected to the global tree network through the TreeChain Platform.

Transperent Process

Establish absolute mechanisms and procedures to initiate, mobilize resources, operate plantation & digitization projects, and create an optimal care and protection system. tree network publicly and fairly.

Decentralized Economic

All exchanges, cooperation, building and development in the TreeChain Platform are based on a decentralized mechanism that equals all economic relations on the basis of digital technology.

Balance Ecosystem

Set up and maintain a balance of benefit value for all participants in the TreeChain ecosystem, minimizing the natural destructive power for human profitability.

PROOF OF TREE (PoT) PROTOCOL

SEEDING

Initiate & deploy a tree planting project in TreeChain Network.

Through TreeChain Platform, a tree planting project will be initiated, communicated, donated & built by the community, mobilized of finance & human resources from the community.

Tree planting initiating units will utilize resources mobilized through the TreeChain Platform to implement and accomplish the project objectives.

PROTECTION

The period begins when the TreeChain Bio-chips are activated & connected to the global network.

Through the TreeChain Platform, individual trees in the network can be transparently monitored & monitored to ensure growth and development.

Any direct and indirect threats affecting the survival of the tree network will be predicted and systematically implemented to handle every situation.

OPTIMIZING

The stage at which the value of the tree reaches the point of commercial exploitation

Through TreeChain Platform, commercial operators can trade, exchange and purchase all legitimate products and services to generate revenue and profit.

Depending on the nature of the project and the value of commercial exploitation, profits will be re-invested in the TreeChain ecosystem in the most transparent and effective way.

PROOF OF TREE PROTOCOL PROCESS FOR NEW TREE PLANTED

01.

PROJECT SEEDING

Eligible entities will initiate tree planting projects on the TreeChain Platform. All information & project implementation will be transparent & transparent.

1

02.

DONATION

The TreeChain Platform tree planting project will be communicated and accessible to millions of potential Donors & Charities to mobilize resources for project implementation.

2

03.

TREE PLANTED

Through professional tree providers and volunteers, the trees will be planted and completed all target.

3

PLANTING MISSION

Appeal and create tree planting movement around the world is **TREECHAIN NETWORK's** most important mission.





NEXT GENERATION

- All the children who were born in the last 10 years are the victim of climate change.
- If climate change awareness is built on a good foundation, hundred of millions of children can create an environmental revolution and save their generation in the future.
- One of the key strategies in TreeChain Network is to raise awareness in protecting environment for the next generation.
- TreeChain Network will have thousands of projects and campaigns to guide children from age 3-15 and form millions of children mindset to inherit and develop TCN in future.

PLANTING NETWORK

With the goal of planting more than 11 billion trees over 10 years, TREECHAIN NETWORK will utilize all social resources to link and form a network of tree planting in more than 100 countries around the world.

TREECHAIN NETWORK's movements, campaigns & projects will receive the support of more than 10,000 charities and NGOs.

PLANTING PROJECTS



 TREECHAIN
NETWORK

11  **MILLION
TREES**
HOURS

 Visit treechainnetwork.com for more information




**WEEKEND
PLANTING**

*Plant a tree
with your own hands*

 TREECHAIN
NETWORK

PLANTING STRATEGY

Developing countries

- In contrast with developed countries where there are native forest preservation systems, developing countries are suffering from deforestation because of low income, poverty, poor management and low environment protection awareness.

- TCN tree planting and protection projects help developing countries to build Tree management and protection systems. From there, we expand tree planting projects on regional and national scale.

- The first countries to which the TCN has to focus and invest on are the high-value forest ecosystems that need to be preserved, as well as willingness to cooperate and act on government and institutions such as Brasil, India, China, Vietnam, Malaysia.

- It is estimated that up to 85% of plant protection projects and 70% of new TCN plants are in these countries.



PLANTING STRATEGY

Desertification

- These are areas directly affected by desertification and global climate change.
- The TCN's strategy is to study the models and optimize hi-tech plantations which are suitable with the climate of each area, to create green shields to stop global desertification.



PLANTING STRATEGY

Make use of all available vacant land

● Almost all of the human settlements that exist today were primitive natural forests thousand years ago. But when deforestation for housing and agricultural land, then urbanization and industrialization, people empty billions of vacant land of different sizes.

● TreeChain Network will try to fill all of the vacant land with green trees. By the year 2030, more than 10 million “little forests” will be created and developed throughout the world.

PLANTING TECHNOLOGY

The two key tree planting technologies in TCN first phase is to help minimize human resource and costs in tree planting projects.

SEEDING DRONE

Drone carrying seed bags spread evenly over a planned area. After that, all care and protection process will be automated with Drone & assistant technologies

SEED BOMB

The seeds are mixed into the suitable compost containing the soil moisture and nutrients. Then the seed bombs containing hundreds of pellets will be released into the planned areas.

PLANTING SOCIAL

Anytime

TCN tree planting projects also aim to generate income, profits for growers. This will create a lot more motivation than volunteering to participate in rescuing the Earth's environment.

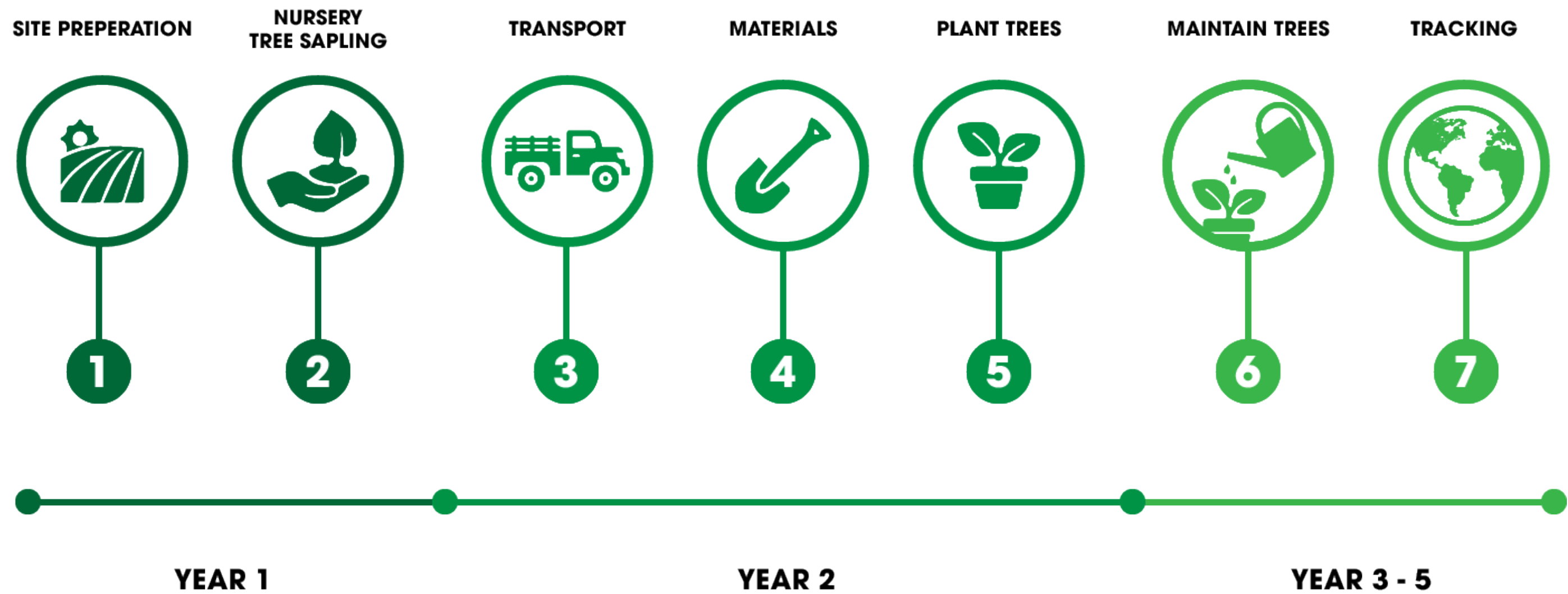
In addition, all resources from organizations and individuals contributing to TCN tree planting projects will receive short-term and long-term benefits to develop a more sustainable community.

ANYWHERE

Anywhere

Anyone in TCN community can easily participate in activities, events, campaigns in the TCN system from their home & work place. It is more convenient for member to increase their contribution.

PLANTING PROCESS



TREECHAIN PLANTING MODELS

TreeChain Desert

A large-scale planting model to creating a green wall will prevent desertification and climate change, and cover sandy and dry soils that prevent potential desertification.



TreeChain Home

Tree planting model in residential and residential areas will optimize small spaces & private owned area.



TreeChain Area

Public and private sectors models such as schools, hospitals, temples, office buildings, corporate campuses





TreeChain Forest

Planting models are based on existing global forest planning studies and TreeChain Forest plans to connect, protect and expand on a proprietary and artificial forest base model under TREECHAIN NETWORK management.



TreeChain City

Tree planting model to optimize the space in residential areas, urban areas and cities participating in the network TREECHAIN NETWORK



TreeChain Farm

Planting model takes advantage of the available space in farms, farms and farmhouses to increase the value and benefits of low value agricultural land.



TreeChain Zone

Tree planting models utilize bare lands to create “miniature forests” that create landscapes and commercial values. This is the main model & a great strategic value in environmental improvement & optimization in addition to the primary forest reserves of BC.

PLANTING TREE ROADMAP

2018

- Start the project
- Plant **5 million trees** in **8 countries**
- Focus on **TreeChain Zone & Farm** models

2020

- Plant **100 million trees** in **30 countries**
- Develop more than **100 TreeChain Forest & 2,000 TreeChain Zone**
- Over **1,000,000 members** join TreeChain Network

2022

- Plant **300 million tree** on **50 countries**
- Develop more than **200 TreeChain City & 5,000 TreeChain Zone**

2019

- Plant **30 million tree** in **20 countries**
- Develop more than **500 TreeChain Zone**
- Test **03 TreeChain Desert**
- Complete **TreeMaps** version 1.0

2021

- Plant **200 million trees** in **30 countries**
- Develop more than **300 TreeChain Forest & 3,000 TreeChain Zone**
- Develop more than **50,000 TreeChain Home & 20 TreeChain Desert**
- Over **10.000.000 members** officially join Treechain Network

2023

- Crossing the threshold of **1 BILLION TREES** in the treechain system

TREECHAIN COMMUNITY

Connecting & developing community of TreeChain Network system



100,000,000
TreeChain members

Members who registers and join
TreeChain Network



1,000,000
Crowd Investors

Investors (funding, human
resource, ...) who join and
invest in TCN community
fundraising campaign



5,000
Contributors

Organizations and
Individual who contribute
(funding, projects, legal
advice, ...) to the network



100
Sponsors

Sponsors who provide
legal advice, infrastructure
& project support for the
worldwide TreeChain Network

2,500,000,000 USD

**Total value of investment, contribution & funding of
organizations & individuals to TreeChain Network in 3 years**

TREECHAIN SOCIAL

The TreeChain Network's members will be using TCN social network as well as participating in TCN's community events / activities.

100.000.000 users

Targeted after 3 years of development, the social network TreeChain Network will reach a membership of 100 millions, of which more than 30 million active members.

20.000 campaigns

By 2021, there will be more than 20,000 public / community events, conferences, sports, entertainment events ... created on a global scale, attracting more than 10 million people in attendance.





TREECHAIN CARD

Community is a membership system that gives TreeChain Social official members their privileges around the world.

With TreeChain Card, TreeChain Network can have thousands of privileges in shopping and services.

By 2020, more than 50 million TreeChain Cards will be activated and used in more than 40 countries around the world

TREECHAIN BIO-CHIP

TreeChain Bio-chip is a the revolution in managing and preserving the Earth's biosphere to sustain the lives of mankind through nanotechnology and the internet.

TREECHAIN BIO-CHIP

Realtime Active

The platform is researched and developed by the technology team of TREECHAIN NETWORK, that has the ability to manage, store & upgrade constantly, operate the entire social network, application & optimize features of Treechain Bio-chip.

Blockchain Technology

The entire Treechain Network's global crop network is traceable to species, originated, connected, maintained, protected & preserved by Blockchain technology based on the TreeChain Platform.

On-Chain Connection

Connect with TREECHAIN NETWORK around the globe

Nano Bio-Tech

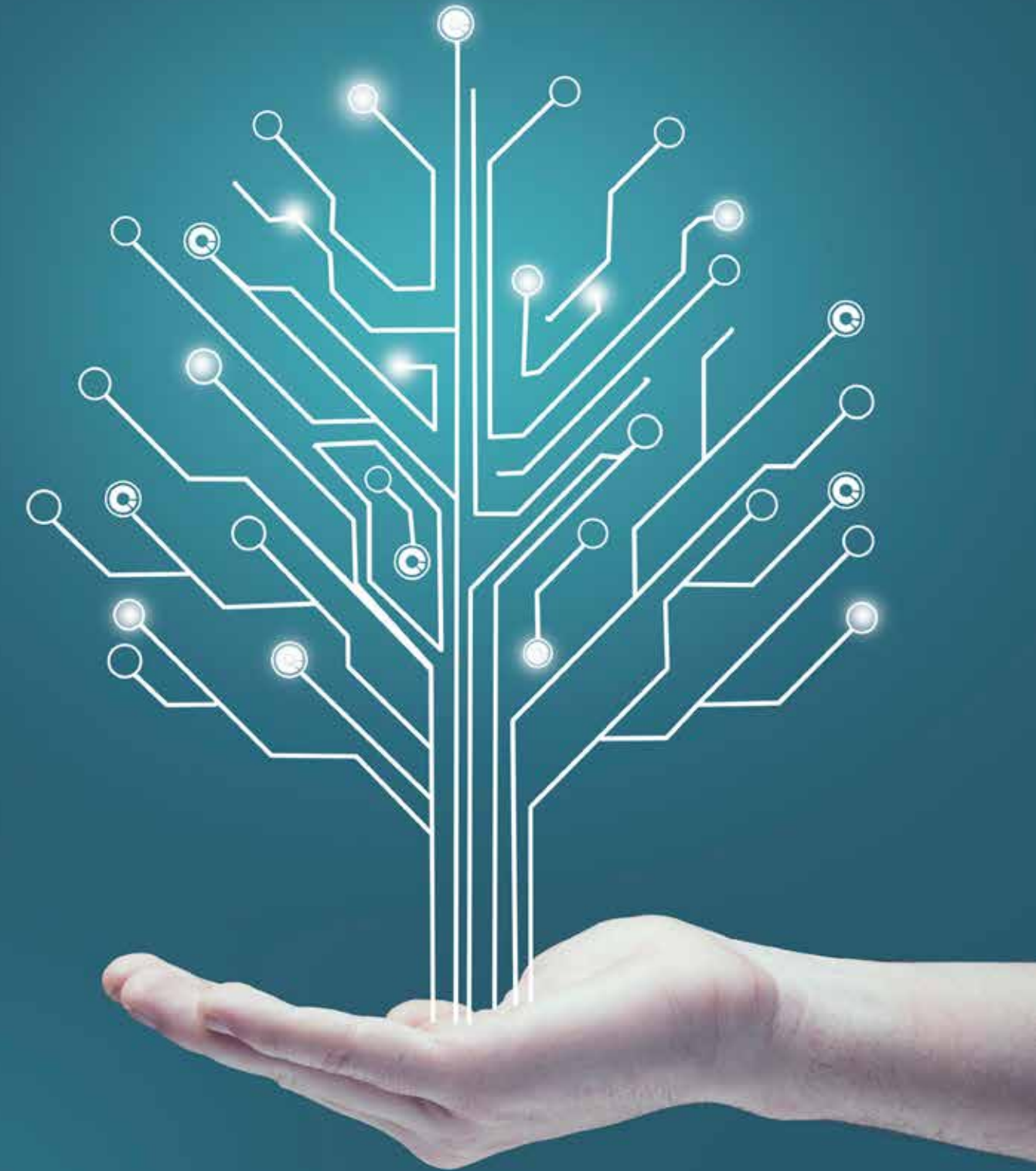
Is researched and developed on nanotechnology, with biological materials & structure, fully compatible with individual plants.

Big Data & AI Technologies

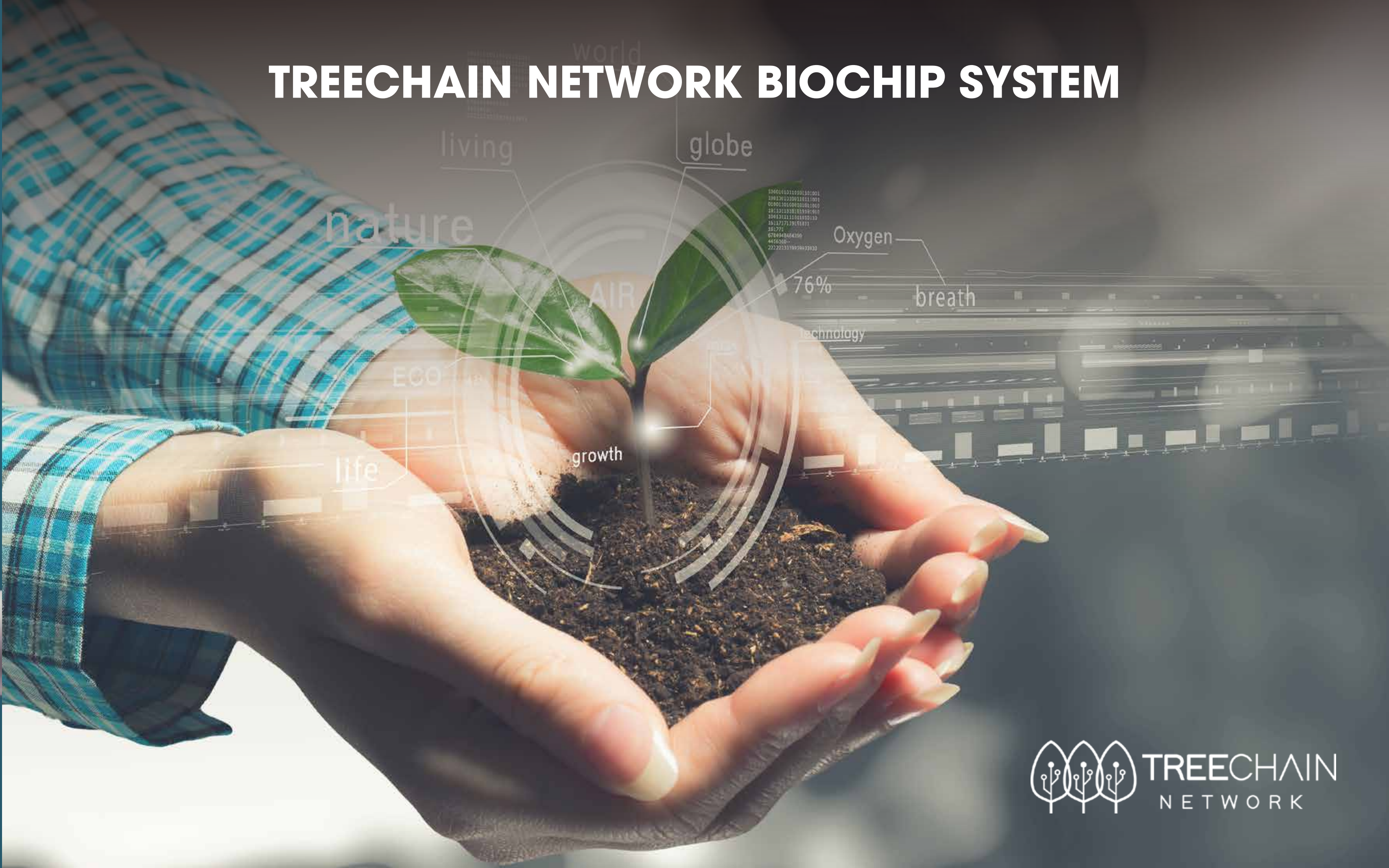
The bio-chip's versions are constantly being researched and upgraded, integrating TREECHAIN NETWORK's Artificial Intelligence & Universal Access technology.

Tree Lifetime

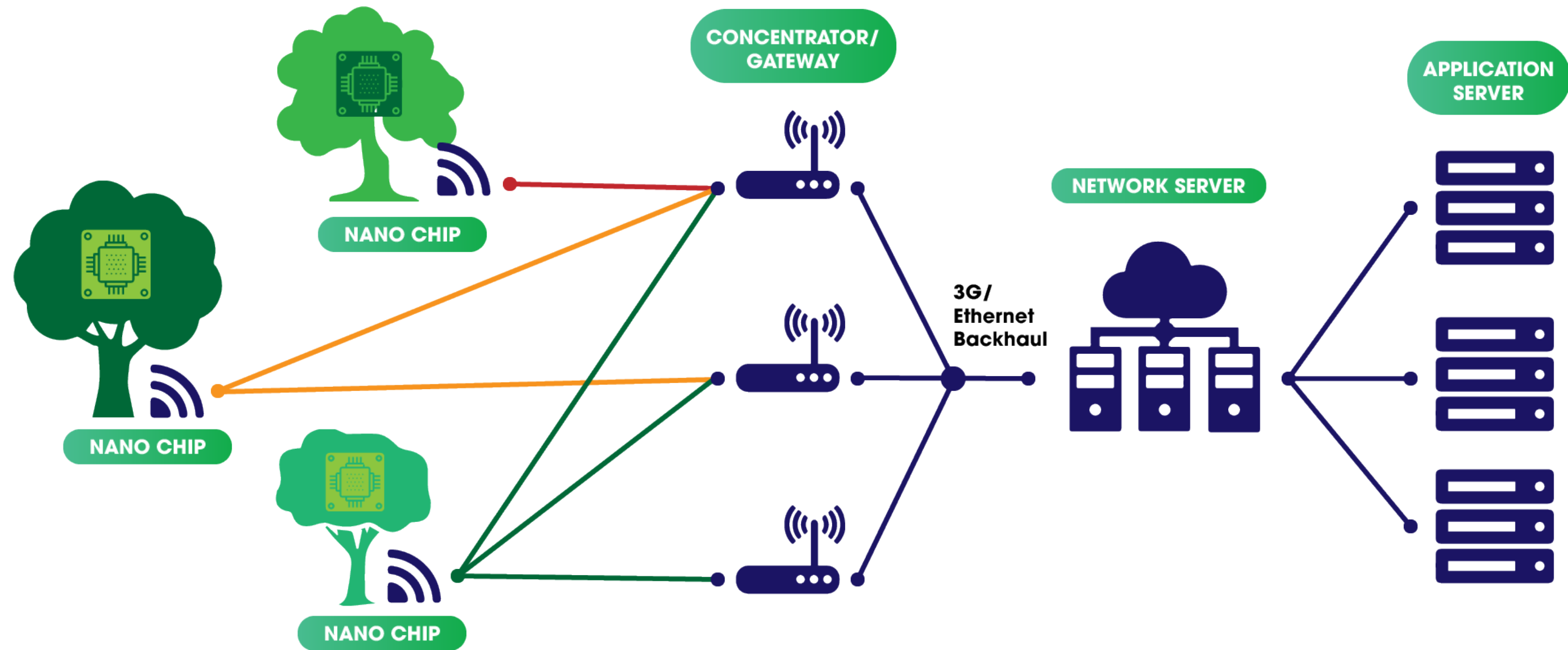
Complete lifetime symbiosis on individual plants



TREECHAIN NETWORK BIOCHIP SYSTEM



Wireless LoraWan Network for IoT Applications in Tree Chain Network - Solution 1



Solution 1-LoRaWan Network Description

- LoRaWan network uses star topology, it is designed to allow low-powered devices to communicate with Internet-connected applications over long range wireless connections. Consequently, it is a very good network to monitor and manage a large number trees in TreeChain Network.
- LoRaWan network elements: LoRaWan Network consists several elements: LoRa Nodes / End Points, LoRa Gateways, and Network Servers.
- In our TreeChain Network project at first stage we use Lora modules developed by Semtech such as Semtech SX1301 as LoRaWan macro gateways, chip SX1276 embedded with ST's ultra-low power STM32 as Lora Node which could connect to necessary sensors to monitor tree status...
- Key features of Lora components:

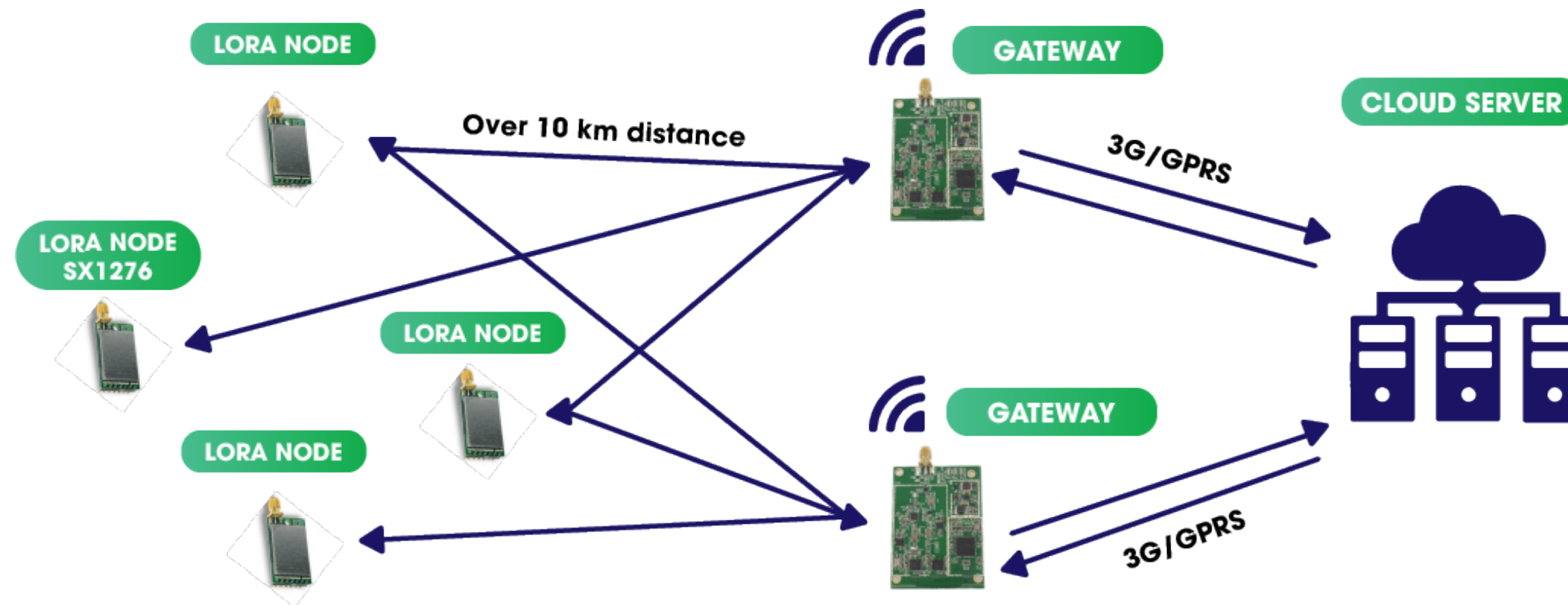
LoRaWAN network architecture is deployed in a star-of-stars topology in which gateways relay messages between end-devices and a central network server.

LoRaWAN modules may work in the 868/900/433 MHz bands, it allows the whole system can work with very low energy consumption and long distance transmission.

With ultra small size of 26x14x3mm, Lora nodes can be integrated into tree so easily and quickly.

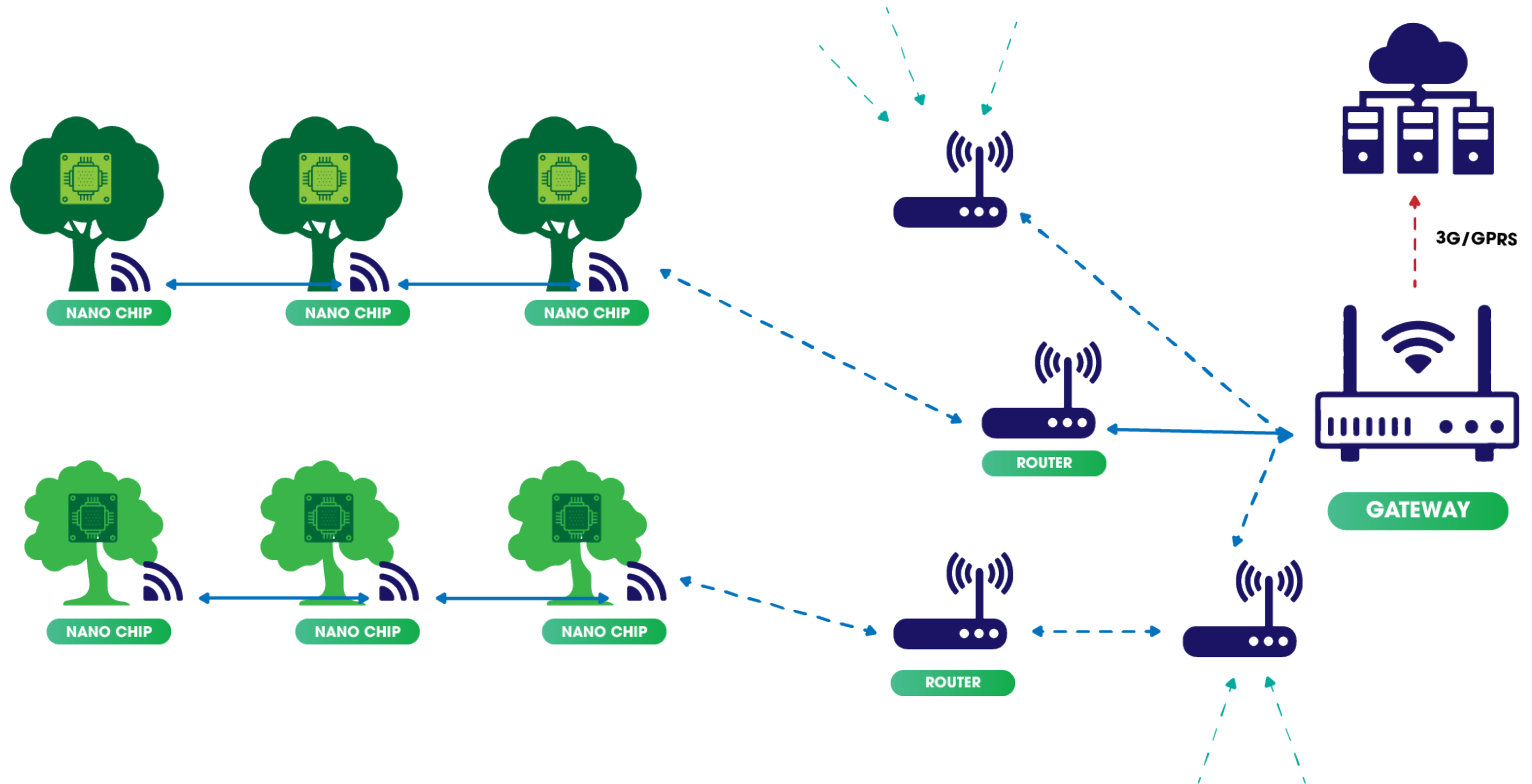
One single LoRaWAN Gateway could cover over 10000m which all the nodes within its covering area can send data to server through Gateway. Therefore, we only need very small number of Gateways to cover a very large area of tree, in other words, it is very low cost investment, and high efficiency for IoT device to digitalize tree planted by LoRaWAN Network solution.

Solution 1-LoraWan Network Working Description



- In our LoraWan Network, each Lora node with integrated sensors will be attached to every tree to represent the data, status of each tree. With low working frequency (413Mhz to 915Mhz bands), every node could work under very low power consumption (as voltage supply of 3.3V, normal working current is ranging from 12mA to 90mA).
- After a gateway receives and interprets a data packet from Nodes using LoRa technology, it forwards the data to a network server via standard IP connections such as 3G.
- As long as our Lora Nodes within the wireless network of Gateways, they can send all the data needed to network server. Instead of sending slower messages to far away gateways, the server would rather have the end nodes send a quicker message to one gateway nearby. So it could make sure no data loss and faster transmission speed.
- With outstanding performance of LoraWan Network, it is very excellent solution to create a specific private network of IoT for our global TreeChain Network.

Tiny Mesh Network for IoT Applications in Tree Chain Network - Solution 2



Solution 2 - Tiny Mesh Network and Device Description

- Tiny mesh is a powerful and comprehensive wireless mesh network infrastructure and gives a robust and reliable wireless device networks with secure two-way communication for remote monitoring, data collection and control. Therefore, it's very suitable for monitoring tree status and ambient environment information.
- Tiny mesh components: This network may contain large numbers of Tnymesh-enabled devices or nodes where a node is one of three types: Gateway, Router, or End Node, every single node device can be flexibly configured to be End Node, Router or Gateway.
- In Tree Chain Network of first stage, we use Radiocrafts devices such as RC11 series to create a whole smart Tiny mesh network connecting every tree to our cloud servers. With working frequency ranging from 433Mhz to 915Mhz bands, radiocrafts modules prove to be very efficiency in terms of low energy consumption (2.7-3.6 Voltage Supply, Current Consumption 30mA in RX/27mA in TX, and 0.5uA in sleep mode), and long range transmissions (1200m-3000m).
- Some key features of these Radiocraft modules:

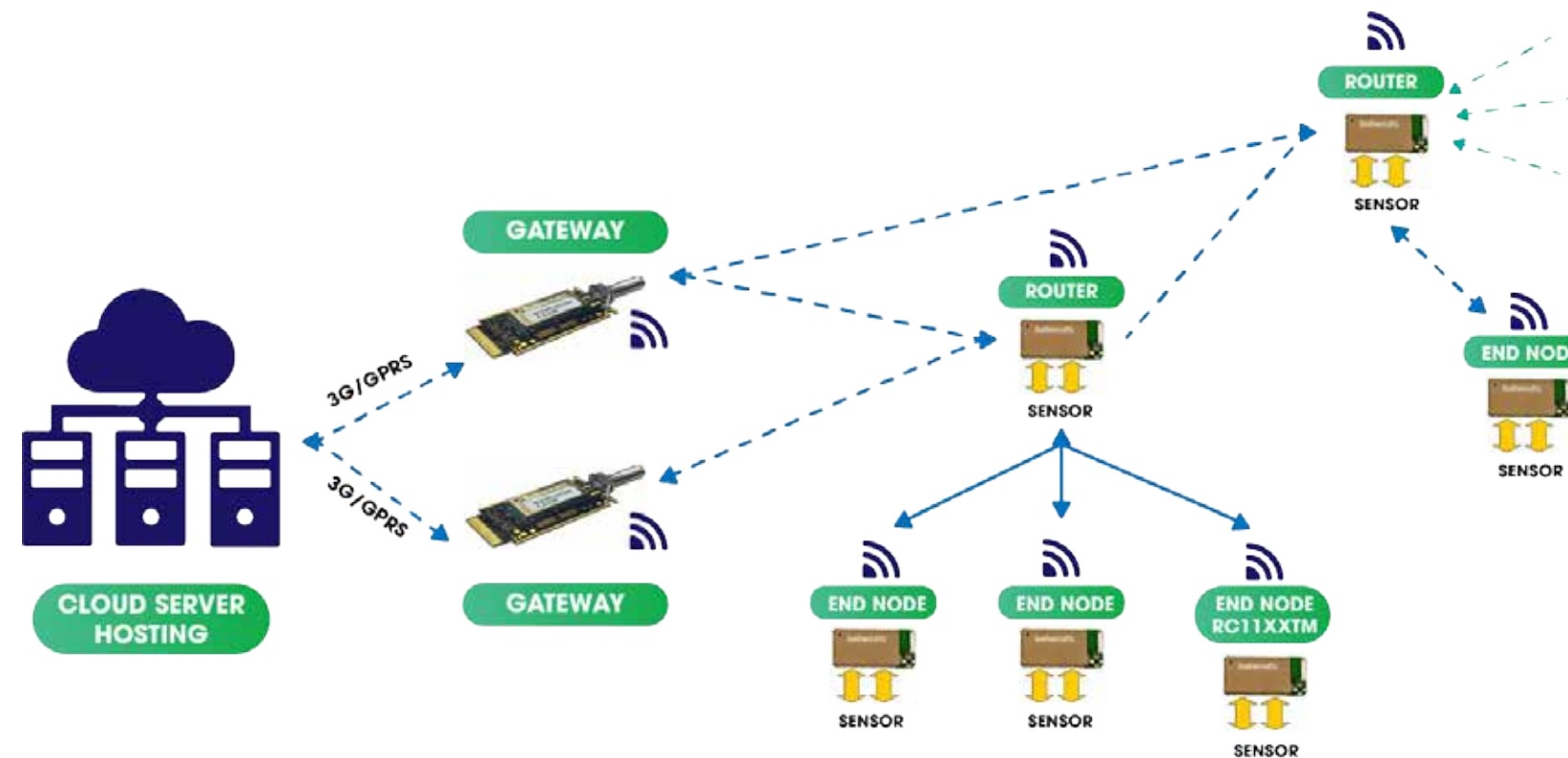
With the size of 12.7 x 25.4 x 3.3 mm, it can be easily attached to a tree to monitor tree status by connecting to different sensors.

Self-forming, self-healing and self optimizing bi-directional mesh network stack, it is super easy to create a large network after seconds of power up Gateway.

"Walk by" mode for low power consumption, and long distance transmissions, it makes sure all data collected without data loss or disruption .

Multiple gateway support redundancy and automatic network load sharing. Therefore, every data or command will be transmitted very smoothly.

Solution 2-Tiny Mesh Network Working Description



- Every End Node will be attached to each tree, and connected to sensors to real-time monitor tree and surrounding environment status. End Node normally is in sleep mode to save energy (0.5uA) and is waken up periodically to transfer necessary data collected from sensors to routers (The transmission distance in open area is about 1200m-3000m).

- Every Router is also attached to tree, Based on real tree map and geographic location we will optimize to appoint for one router to cover a specific number of End Nodes. These routers can work with "walk by" mode to allow all data transferred among routers before reaching gateways without any loss of information for long distance to gateways.

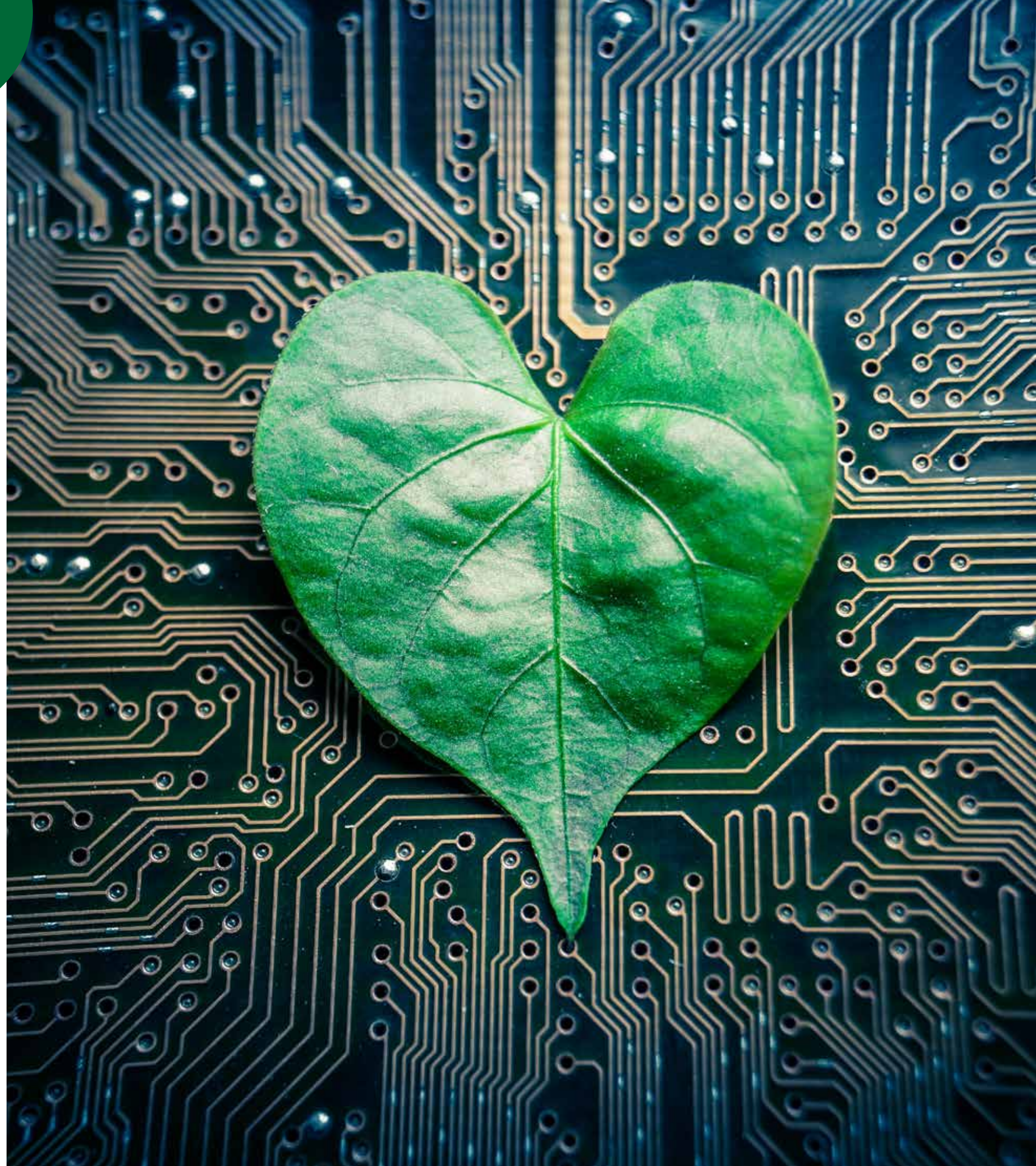
- Several Gateways can be used for one network for redundancy and automatic workload sharing. These Gateways integrated 3G/GPRS modules in order to send all data to cloud servers.

- These three components create a complete tiny mesh network which could serve thousands of End Node/ Router devices equivalent to thousands of trees digitalized per one network. All networks in the world will transfer data to common cloud server, application server to monitor and manage all global trees in TreeChain Network.

TREECHAIN LAB

TreeChain Labs Network

It gathers the experts and scientists on biotechnology, IOT, Blockchain ... worldwide to continually upgrade and complete the TreeChain Network.



TREECHAIN PLATFORM

The decentralized platform which is researched and developed by TREECHAIN NETWORK's technology team. This is a combination of advanced technologies such as AI, BigData, Blockchain, IoT. TreeChain Platform can manage, upgrade and update the entire network, utilize the Treechain Bio-chip and optimize the functionality of the network.

TREECHAIN PLATFORM STRUCTURE



TREECHAIN SOCIAL NETWORK

TreeChain Social Network is a Decentralized Social Network for TCN's members from all over the world.



Gamification

TreeChain Social Network will be a decentralized social network containing hundreds of exciting & engaging features that encourage users to share and contribute content, as well as create campaigns, global diffusion.

Connection

The entire social network members will be connected and interacted through TreeChain Social Network's features (OTT, Chating, Sharing ...) to create interactive communities.

E - Supermarket

TreeChain Social Media will be connected to the huge network of the TreeChain Ecosystem balance of benefits. This will allow members to access, purchase and use millions of products with their privileges.

TREECHAIN MANAGER

Active

TreeChain Bio-chip activation function with individual IoTs

Tracking


Monitor & manage the growth & development of trees

Optimization Offer

Studying and proposing commercial solutions to the individual / group of plants for the participate members



This is a decentralized application that helps individuals and organizations engage in activities to create, launch, develop, exploit and manage plantation & tree digitization projects.

The background of the slide features a complex digital aesthetic. It includes a dark blue field with glowing green and yellow binary digits (0s and 1s) scattered throughout. Overlaid on this are several semi-transparent financial charts, including a prominent orange bar chart and a blue line graph with circular markers. The overall effect is one of high-tech data analysis and digital finance.

TREECHAIN EXCHANGE

TreeChain Exchange is a D-Apps internal trading platform for converting, trading & exchanging resources in the TreeChain Network.

Mining Convert

Transform the activities and value of members of the Treechain network to TREECOIN

Transaction

Trading & exchanging TREECOIN with other Token & Coins

Optimization Trade

Exchange, purchase & trade resources & assets in the TreeChain Network.

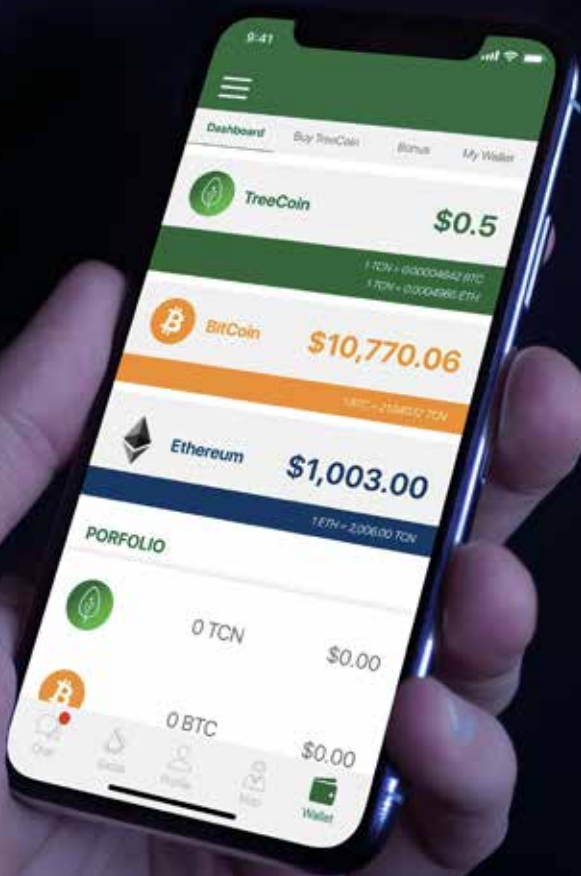
TREECHAIN PAY

TreeChain Pay is a D-App for TCN's members to exchange, purchase and manage personal resources, assets.

Payment **EVERYTIME**

Payment **EVERYWHERE**

Payment **EVERYTHING**



TREECHAIN NETWORK ROADMAP TECHNICAL

Q1/2018

- TreeChain Network project structure constructed
- Company registration and beginning of development work on

Q2/2018

- TCN Token (ERC-20 Protocol)
- Mobile App

Q3/2018

- First beta of TreeChain Network Platform V 1.0 with Trading wallet, Payment wallet, the Holding Wallet, crowdfunding structure
- Delivering TreePay for charities to integrate the donation button into their websites.
- Upgrade of security structure and support center

Q4/2018

- Listing TCN to exchanges
- TreeChain Network Platform V 2.0 and TreePay
- Mobile App TreePay (Android and iOS)

Q1/2019

- TreeChain Network Platform V 3.0
- TreePay Module
- TreePay API key develop and bug testing.
- TreePay API key Release for corporate payments.

Q2/2019

- Treepay & TreeChain Network Platform V 4.0

TREECHAIN FOUNDATION

A resources & finance foundation for the creation, management and operation of the entire TREECHAIN NETWORK system worldwide.

TREECHAIN TEAM

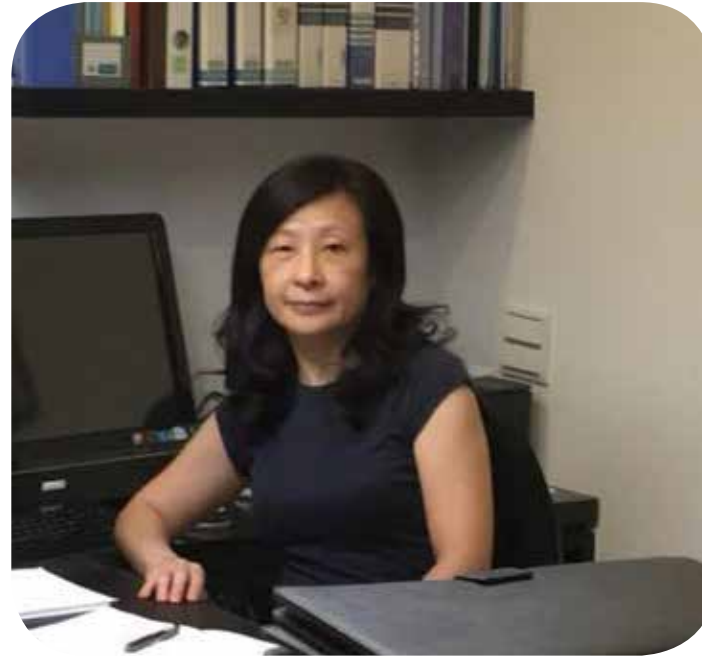


Wan Kian Tak

(1976)

Malaysian marketing strategy and business development expert - special committee in the Malaysia business chamber association, overseeing about 200 trading companies of their daily activities.

He has intensely diversified into Oil and gas infrastructure building, construction development and digital Marketing, he has established a name for himself with flying colors in the new industries.



Sandy Liao

(1966)

Senior Legal, Tax & Financial Adviser to leading corporations & businesses in Japan, Korea, Taiwan and Hong Kong.

Sandy Liao has over 40 years experience in the finance and legal system. Helping more than 20 major corporations save hundreds of millions of dollars in tax each year with her financial strategies.



BonSeong Gu

(1971)

Senior consultant of more than 20 companies in Asia.

Ph.D. in cultural studies, sociology researcher.

Professor of Teaching at Dongguk University, researcher in culture & psychology. BonSeog GU has over 20 years experience in humanity and sociology.

TREECHAIN TEAM



David Ta
(1983)

Building TreeChain Network blockchain platform aiming for transforming sharing economy models from centralized to decentralized structure. Building the first e-commerce system Baby-Caring service in Asia. The head bridge engineer for Japan, US and Australia market.

10 years experience in creating and developing business digital solutions that helps many multi million dolar companies such as VNG group, EGroup, SBCorp to increase their profits.

Established SBCorp.,JSC aiming for the realization of the Social Business operating system into a Startup Social Business network (SocialBiz), creating hundreds of thousands of SocialCEO, effectively solving the problem of unemployment, goods circulation and market confidence.



Jon

Jon has been working with software and education for more than 10 years. He saw the impact of the volunteer community during the war in the Balkans, and understands the importance of people reaching out across borders.

Having travelled extensively in Asia and Europe, coupled with family members living in Asia, Jon understands the significance of understanding culture in order to achieve results.

Having worked on numerous projects, Jon has experience with the planning and structuring of projects.

TREECHAIN TEAM

Lee Vu
(1976)

Master of Sociology; ex-President of Viet Nam Volunteer Center, the biggest National Voluntarity Center in South East Asia.

Ex Vice President of The Vietnam Youth Federation (VYF). Lee Vu has nearly 20 years of experience in voluntarity, community development and operate global volunteer campaigns with partners such as UNWOMEN, UNESCO, UNDP, GOOD DEED DAY as well as other volunteer organizations in the world, especially IAVE, the world's largest volunteer organization (*founded in 1970, IAVE exists to promote, strengthen and celebrate volunteering in the myriad ways it happens throughout the world. It is a global network of NGOs, businesses, national volunteer centers and grassroots leaders of volunteering, with members in 70 countries across all the regions of the world*)

Jason Liao
(1983)

Master of Mechatronics Engineering at National Taipei University of Science and Technology.

Over 12 years experience in software, IoT and computer vision. An expert in embedded system and image quality evaluation (3A, Camera Module, MTF, Dead Pixel, Dual Band Filter), specializing in designing software structure, application software for embedded chip, smart control and smart testing software in terms of vision AI, image processing, software algorithm & system for 2D and 3D smart camera. A senior manager for big companies such as Foxconn Technology Group, Chroma ATE... he successfully built up hundreds of smart application software systems for his companies.

Bryant T. Nguyen
(1988)

9 years of experience in branding, media, online advertising, marketing & PR.

Investors, shareholders of more than 30 StartUp projects in many fields

Founder of the Vlogplus community (Vlog +), predecessor of Vlogplus social network with over 300,000 members. At the same time, he invested, co-founded the SDate community to successfully help more than 1000 people become couples.

In 09.2014, he founded & operated Suki Brand, an agency specializing in consulting, strategy development & brand development. More than 200 enterprises and organizations and more than 100 individuals have become customers of this project.

TREECHAIN FOUNDATION OFFICES

The 12 branches of the **TreeChain Foundation** have been presenting in **12 countries** and territories around the world: Australia, Austria, Czech Republic, Switzerland, Canada, Japan, South Korea, Malaysia, Taiwan, Vietnam, Myanmar.



TREECHAIN GLOBAL PARTNERS

TreeChain Foundation's network of strategic partners is located all over the world, especially in the Asia-Pacific region.

Global Partners



Environment Partners



Tech Partners



Holding Partners



TREECHAIN FOUNDATION BUSINESS MODEL

Total estimate revenue in 2018-2023

350,000,000 USD

TreeChain Academy

Academic models and institutes are part of the TreeChain Foundation, which creates a high qualified team who are capability to optimize TreeChain Network.

TreeChain Advertising

Revenue resource from optimization of the advertising network in the BCN ecosystem.

TreeChain Fund

Mobilize finance & resources to invest in & develop TreeChain Network projects / campaigns & programs.

TreeChain Social

Values & resonance resources are made up of 100 million members of global BC.

TreeChain Ecosystem

Link and organize trade exchange activities in the BC ecosystem, especially trade optimization in the retail, service, real estate & ecotourism.

TREECHAIN FUND



TreeChain Fund is a social investment fund under the TreeChain Foundation, it is responsible for mobilizing finance and resources to invest in and develop TreeChain Network projects, campaigns and programs.

TreeChain Funds will also be the direct investment / sponsorship / funding and financing unit to develop projects within the TreeChain Ecosystem. **30-50% of profits** from these listings will be reinvested to expand **TreeChain Academy & TreeChain Social**.

TreeChain Funds also functions as a stable fund to help sustain the steady growth of the TreeCoin token and other products and services under the TreeChain Platform.

TREECHAIN ACADEMY

Educational models help sustainably develop the TreeChain Ecosystem and develop next generations for the Platform, social network and ecosystem of TreeChain Network.

All activities of the TreeChain Academy education network are donated and maintained by the TREECHAIN FOUNDATION Global Fund.



TREECHAIN MEMBER PRORITIES



System benefit and privilege are exclusive to TreeChain
Network member network.

Every member of the TreeChain Network will be
identified, decentralized ID, and Treechain Member
Card to fully utilize the privileges that the TreeChain
Ecosystem is dedicated to the global membership
network. .

TreeChain ID & TreeChain Card will also have special
privileged privileges in some special cases (Free VISA
in some countries & regions, free entry at the global
conferences of TreeChain Network)

TREECHAIN ADVERTISING

A business model for leveraging & optimizing Platform, social, space & ecosystem systems of TreeChain Network.

50% of revenues and profits from TreeChain Advertising's business activities are contributed to the TREECHAIN FOUNDATION Global Operations Fund.



TREECHAIN ECOSYSTEM

The ecosystem balances the benefits of TreeChain Network

TreeChain Home

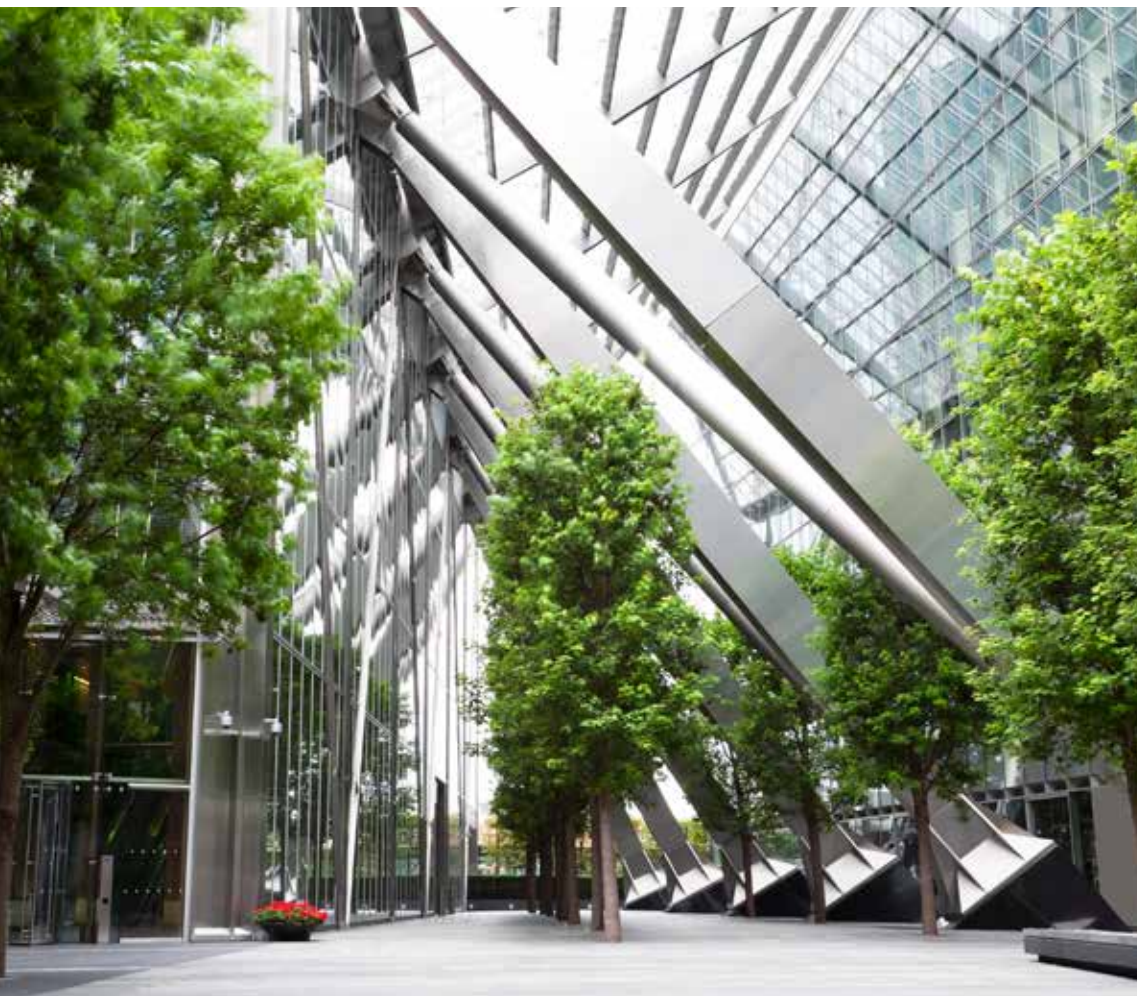
The green home and residential areas are built in TreeChain Network's planned areas and will balance the ecosystem and preserve the surrounding environment.

TreeChain AgriTech

Produce and supply high-tech agricultural products and optimize the resources of the TreeChain Network.

TreeChain Travel

The chain of tourism, hotels, home stay & eco resorts optimizes the resources of the TreeChain Network.



TREECHAIN ECOSYSTEM

TreeChain Shop

The retail chain network (online and offline) optimizes the entire commercial ecosystem services trade

TreeChain Auction

The decentralize automation and transparency auction system to mobilize resources and resonate well for the ecosystem.

TreeChain Services

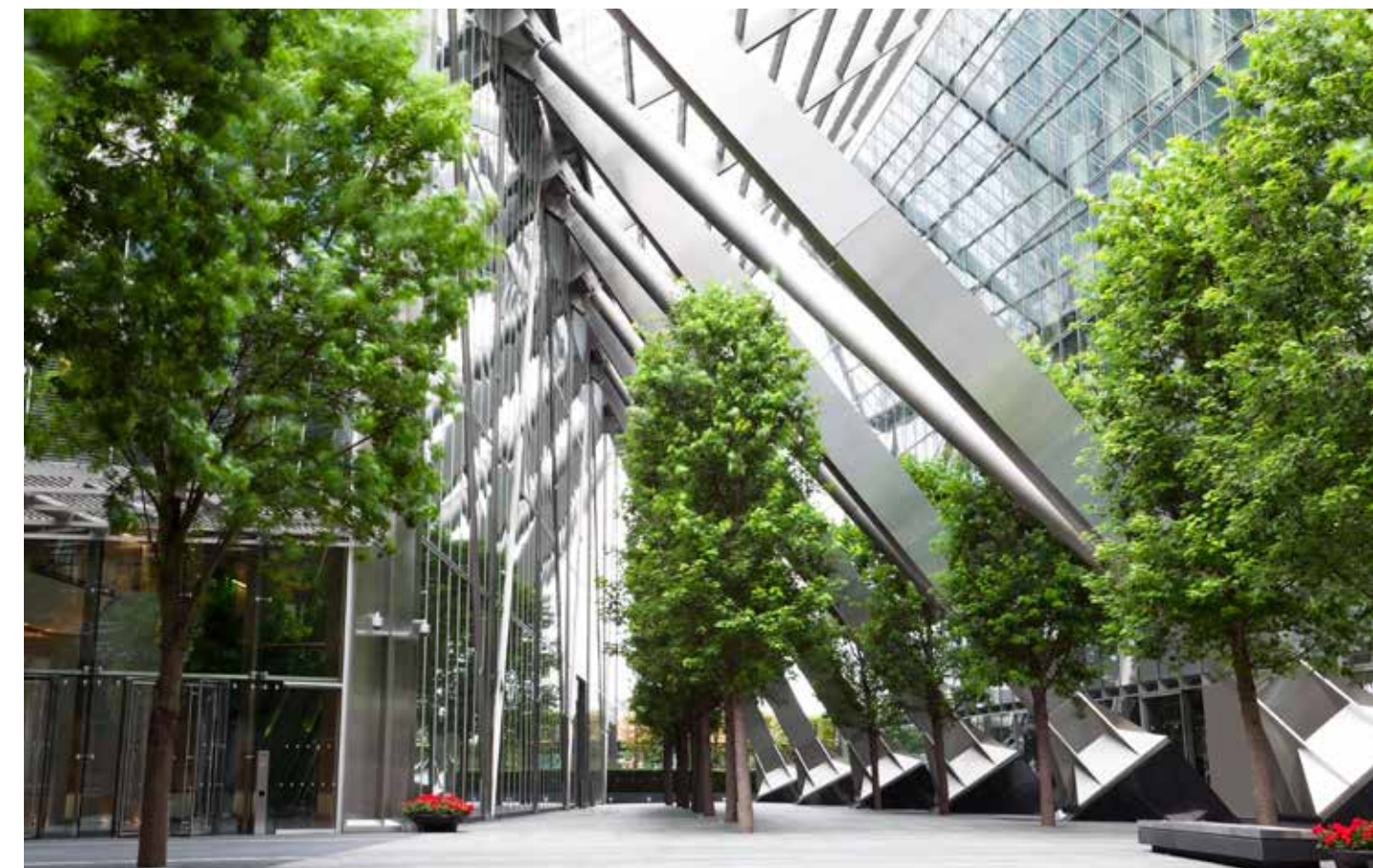
TreeChain Services F & B (Food), TreeChain Entertainment, TreeChain Beauty (Beauty & Wellness), TreeChain Care (Health Care & Medical Services)



TREECHAIN HOME

The real estate network takes advantage of the space and landscape in ecosystems that TreeChain Network owns.

Create many models of apartments and residential areas integrated with each tree model (TreeChain House, TreeChain City, TreeChain Village, etc.)



TREECHAIN FOUNDATION ROADMAP

Q1, Q2/2018

- Build a 10 years development strategy
- Complete legal entities to operate in 08 countries
- Launch campaigns to attract community resources

Q4/2018

- Raise 250 million USD from community
- Launch & develop more than 300 tree planting projects in 8 countries.
- The network reach 100,000 first official members

2020

- TreeChain Ecosystem reache the first \$ 50 million in revenue
- TreeChain Advertising reached teh first \$ 1 million in revenue

Q3/2018

- Raise 30-50 million USD & other resources from community
- Announce cooperation agreement with 50 strategic partners & organizations
- More than 10,000 people in 20 countries know the project
- Launch the first 100 tree planting projects

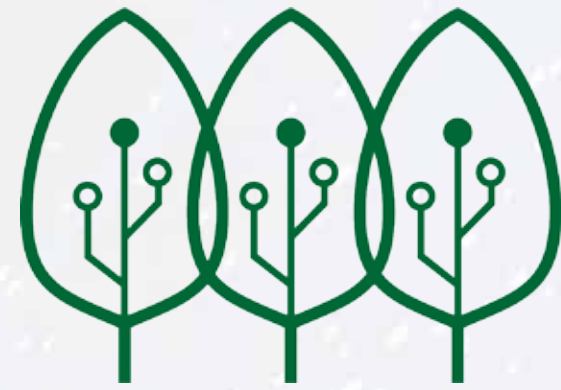
2019

- Establish Treechain Academy with over 500 first students
- Generate the first \$ 10 million from the TreeChain Ecosystem

2021

- Total value of revenue & mobilization from the community

2.5 BILLION USD



TREECHAIN
NETWORK

TREECOIN TOKEN INVESTMENT



TREECOIN

TREECOIN is the official Blockchain Token of the entire TREECHAIN NETWORK ecosystem.

TREECOIN in the early stages of the project will be released on Ethereum platform using ERC20 Smart Contract.

After TREECHAIN PLATFORM is officially deployed, TreeCoin will be released on TREECHAIN PLATFORM. (After deploying TREECHAIN PLATFORM, TREECOIN Token on Ethereum will be FIXED and non-transferable, TREECOIN accounts on Ethereum will be mapped 1-1 to TREECOIN Token on TREECHAIN PLATFORM.)

TREECOIN has a maximum issued total of 11 billion units



LIQUIDITY

TreeCoin is guaranteed absolute liquidity when listed on the world's leading digital money exchanges such as Binance, OKEx, HitBTC, OEx ... By 2020, over 100 million blockchain in TreeChain Platform will own TreeCoin, anyone in that network can also trade, exchange, purchase & transfer TreeCoin any time & anywhere.

TRANSPARENT

As a decentralized digital currency, all TreeCoin transactions in the system will be recorded using Blockchain technology, all bulk transactions are fully guaranteed by the Smart Contract system, eliminating all fraud. & lack of transparency.

PROFIT GROWTH

In line with the global expansion of TreeChain Network, especially after billions of trees are newly planted & digitized through the TreeChain Platform, the value of the TreeCoin converges every condition to a TreeCoin value of 10. USD by 2020.

ACCEPT PAYMENT

By 2020, TreeCoin will be legally available at more than 500,000 payment points within the TreeChain ecosystem. Anyone can use TreeCoin to pay for millions of products & services.

TREECOIN VALUE

ICO CAMPAIGN

100,000,000
Project Awareness

All communication and implementation campaigns will reach over 100 million traffic in more than 50 countries worldwide

3,000,000
New Planted Tree

During the ICO, over 100 TreeChain Network tree planting projects will be deployed in eight countries, with more than 3 million trees planted during this time.

5,000
PR & Media Promotions

More than 5,000 articles and media promotion will be shared and updated throughout the ICO campaign.

100,000
ICO Investors

More than 100,000 community investors will contribute to the project.

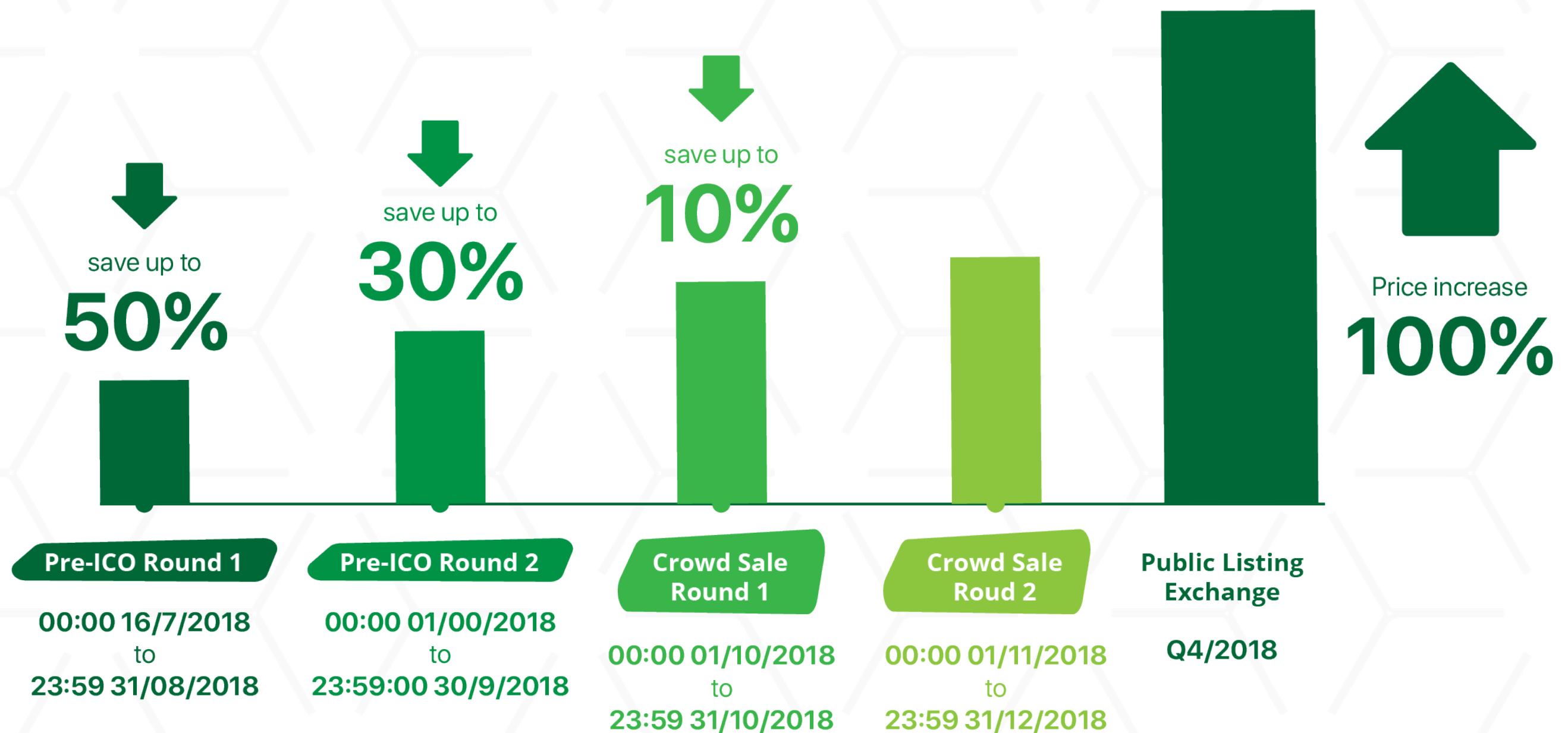
440,000 ETH

The total value of mobilization in the ICO campaign of the TreeChain Network

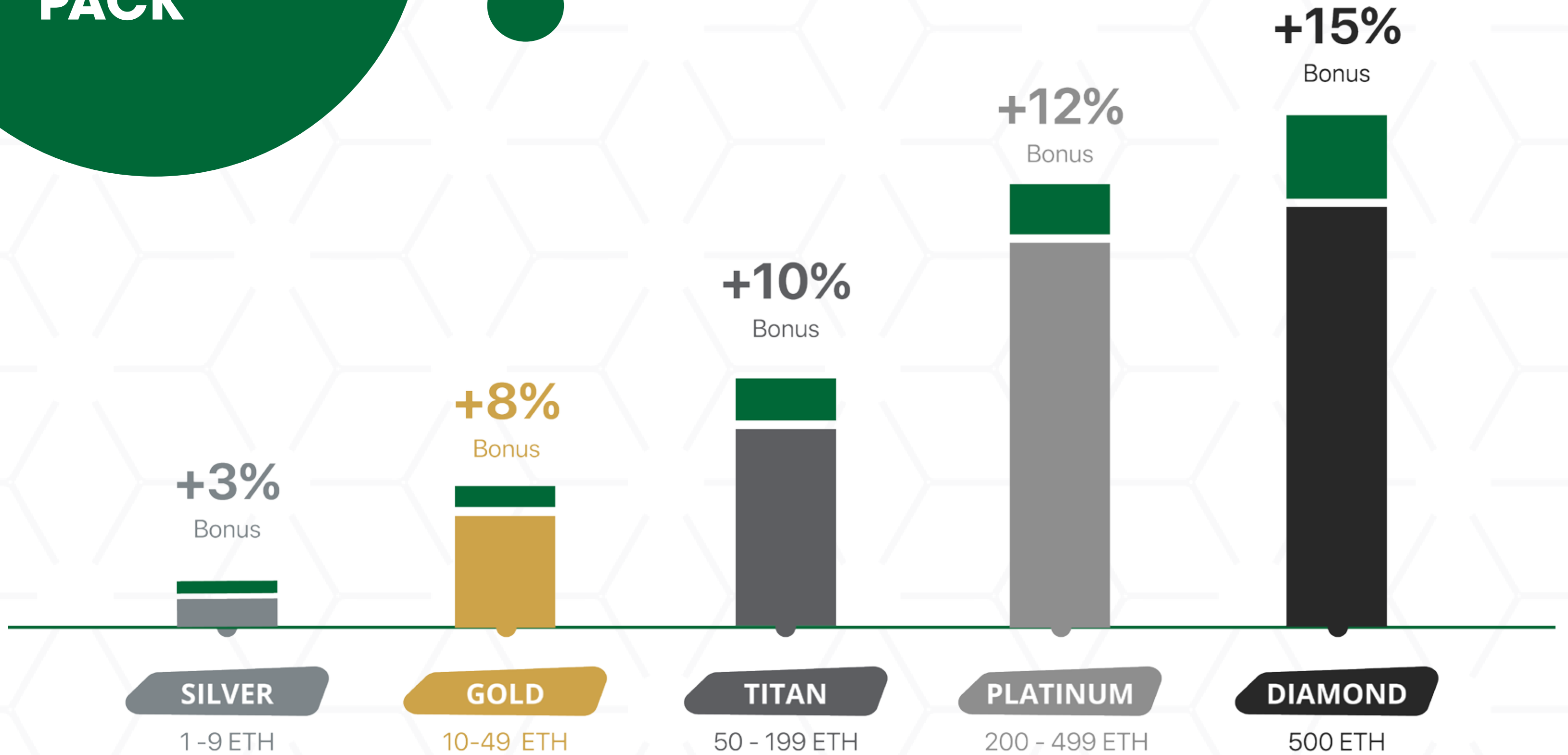
TREECOIN PRICE CHART

5000 TCN = 1 ETH
1 TCN = 0.0002 ETH
1 ETH = 500 USD

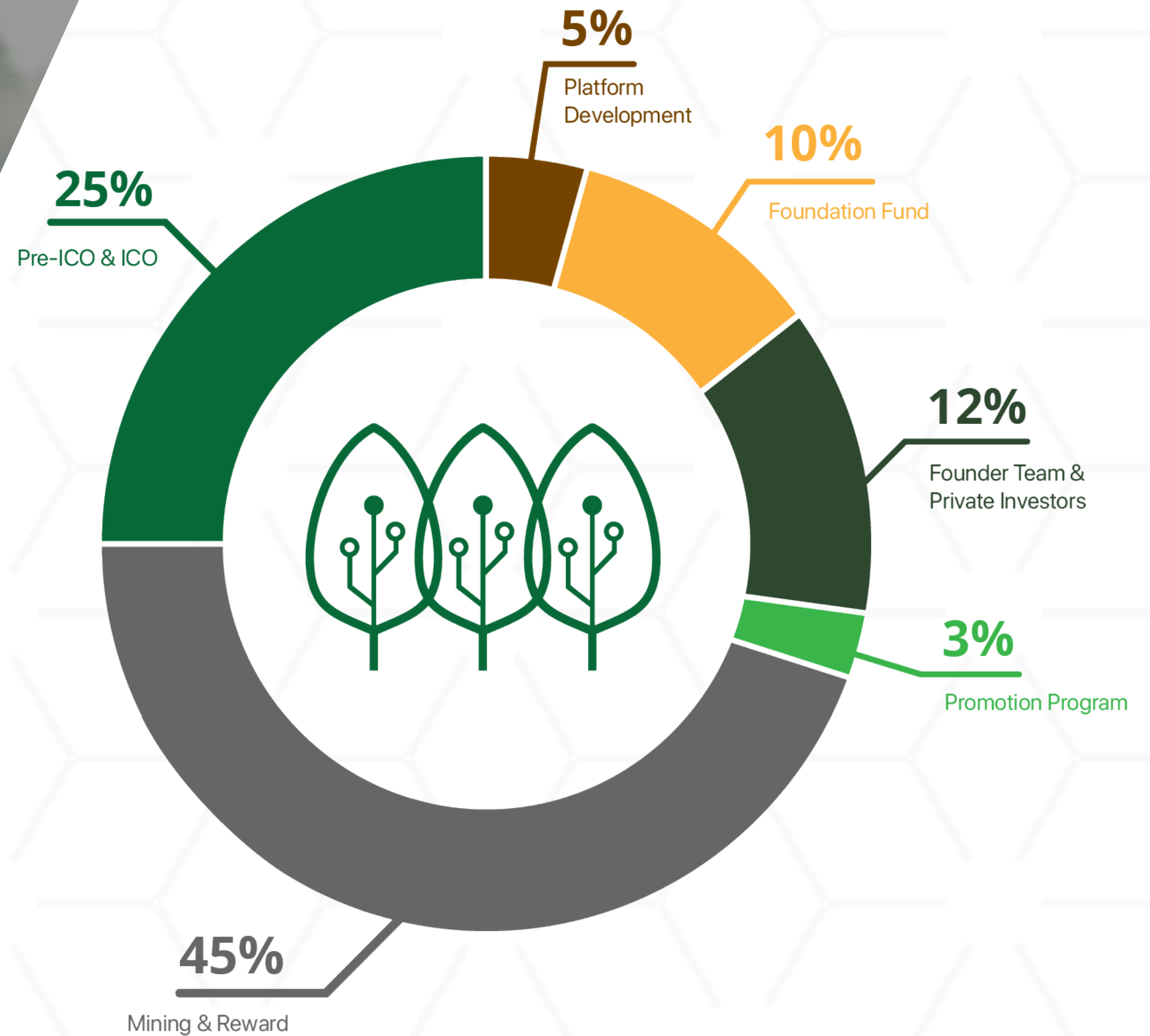
In Q4.2018, TreeCoin Token will be officially listed on the world leading electronic trading platform such as Binance, BitHub, Kyber Network, etc to ensure liquidity & growth value for more than 100,000 community investors.



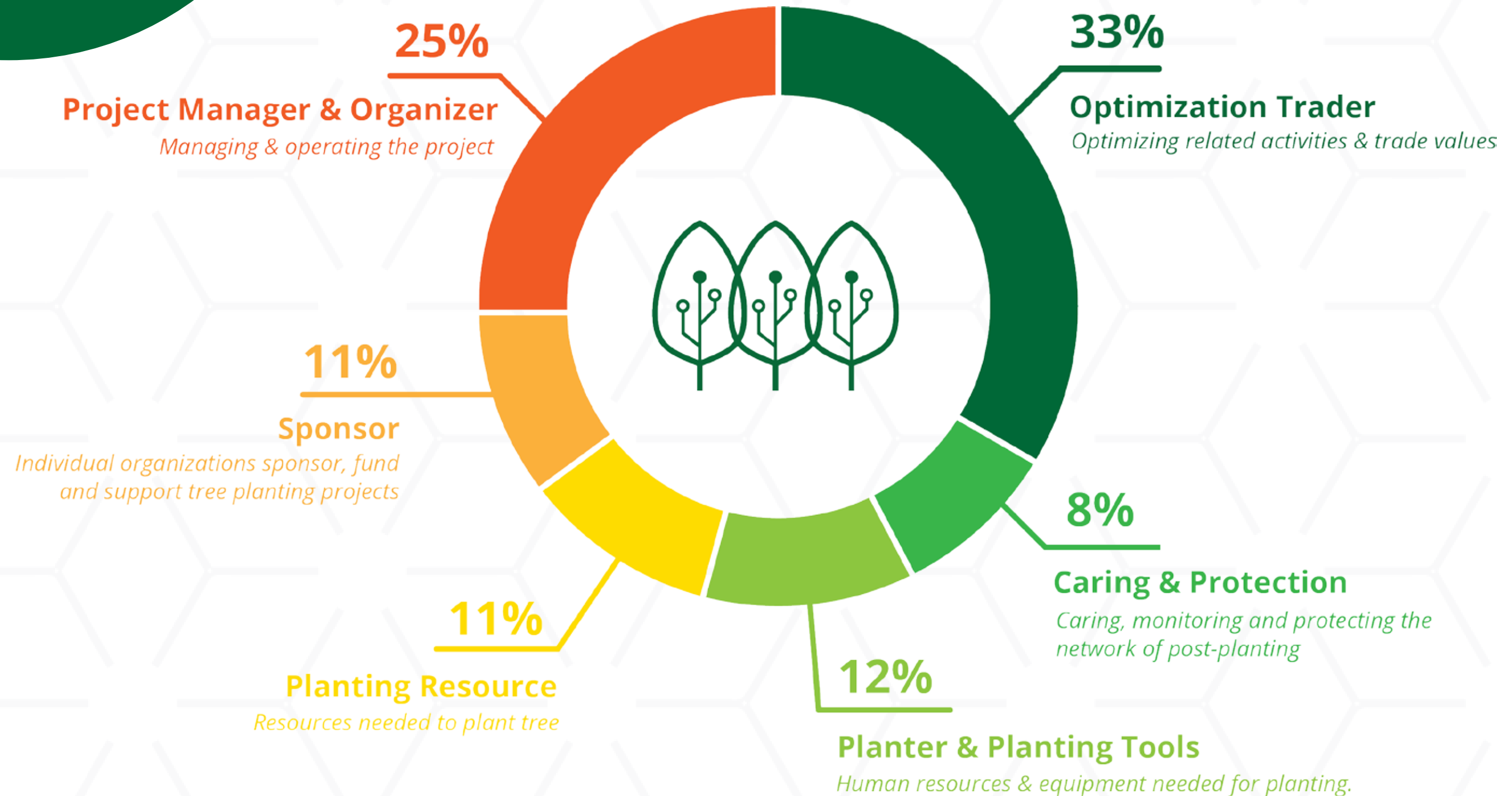
INVESTMENT PACK



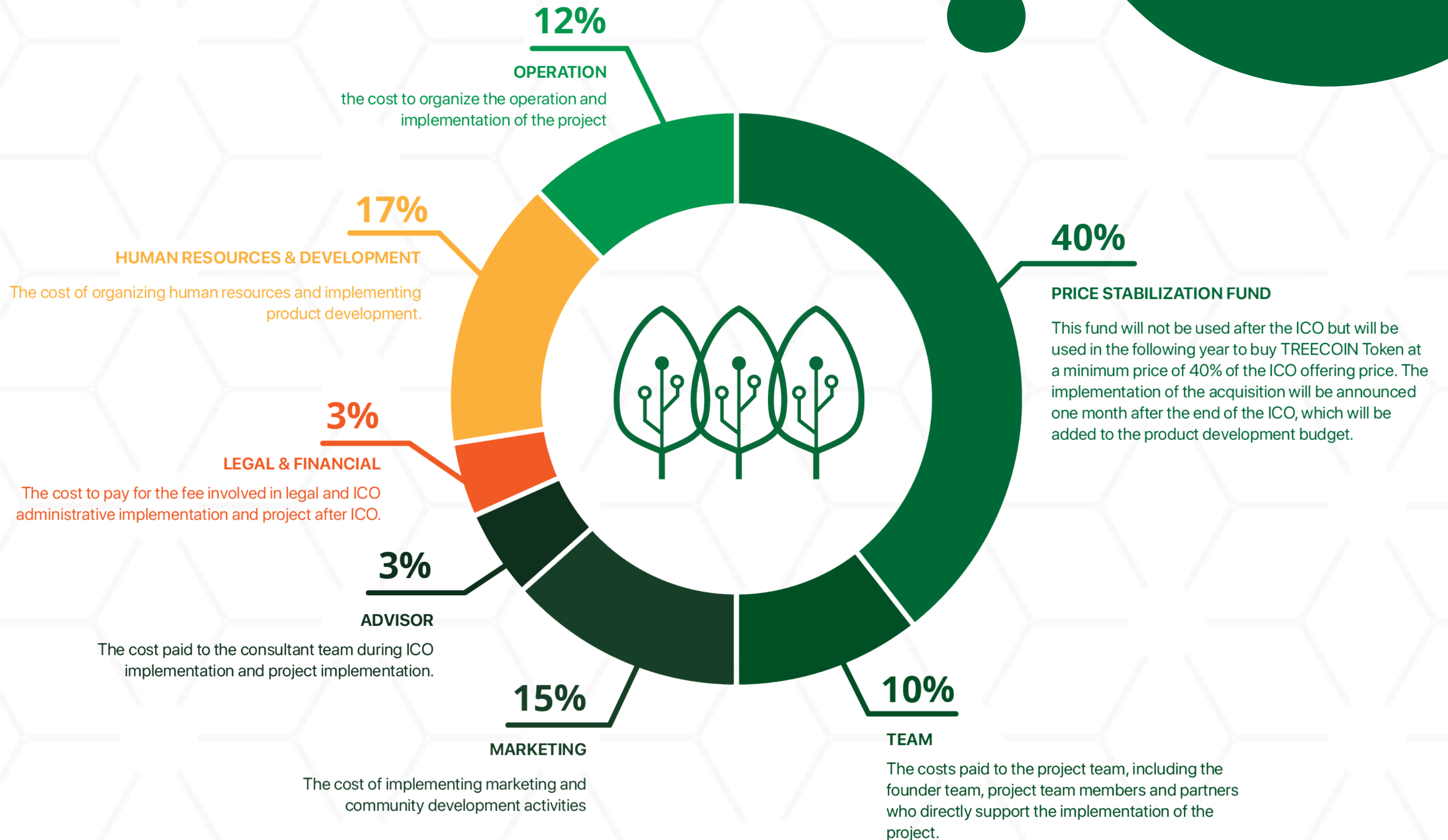
TOKEN DISTRIBUTION



PROOF OF TREE PROTOCOL



AFTER ICO





JOIN US TODAY

THANK YOU!

 treechainnetwork.com